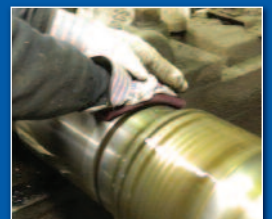
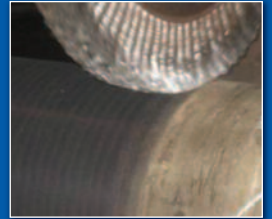
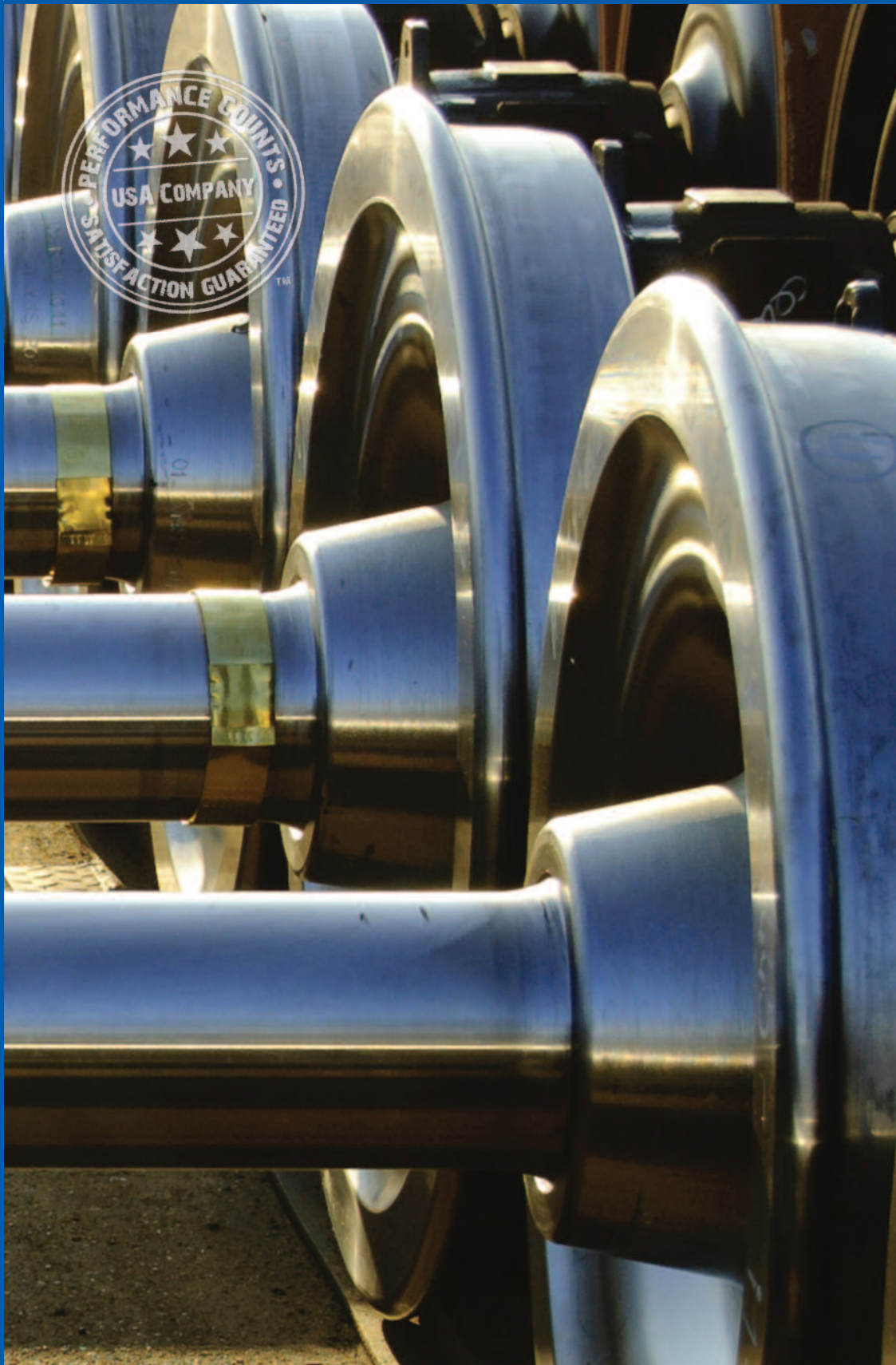


Weiler Products For The Rail Axle Industry



- **Cleaning and Reconditioning Products**
- **Grease Application Products**
- **Maintenance Products**

High Performance Consumables For Axle Reconditioning, Repair & Maintenance

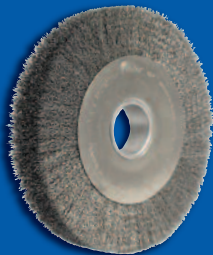
Railcar Axle Reconditioning Products



Knot cup brush cleaning an axle body.



09020



03200



12376



21115

Power Brushes are ideal tools for the removal of accumulated grease, road dirt and rail dust from axles either prior to or after the disassembly of the wheel set. Wire-filled brushes do not remove base metal, and they cut through caked-on surface contaminants much more quickly and efficiently than abrasive products.

Large Diameter Knot Wire Wheels -

For automated cleaning of axles; high aggression provides rapid removal of accumulations from axle bodies.

Dia.	Wire Size	Arbor Hole	Number of Knots	Face Width	Trim Length	Thickness at Face Plates	Max. RPM	Standard Pack	Item Number Steel		
12"	.020	2"◆	56	5/8"	2-3/4"	13/16"	4,500	2	09710-14+		
	.020		66	3/4"	2-1/4"					5,000	09950+
	.023		66	3/4"	2-1/4"					5,000	09870
14"	.0118	2"	80	3/4"	2-1/2"	5/8"	5,000	2	08300		
	.014								08310		
	.020								08330		
14"	.014	2"◆	90	3/4"	1-1/2"	5/8"	5,000	2	09020*		
	.016								09030+		
	.020								09040*		
15"	.0118	2"	80	3/4"	3"	5/8"	5,000	2	09960		
	.014								09980		
	.020								09990		
15"	.014	2"◆	90	3/4"	2"	5/8"	5,000	2	09060+		
	.016								09070+		
	.020								09080*		

◆ 1/2" x 1/4" Double Keyway
* Economy

+ Special order item. Contact Customer Service for details.
Other arbor hole sizes are available for above items, contact Customer Service for details.

Large Diameter Crimped Wire Wheels - For automated cleaning of axles; flexible brushing action allows greater conformability for thorough cleaning of wheel seats, dust guards and journal filets.

Dia.	Wire Size	Arbor Hole	Face Width	Trim Length	Thickness at Face Plates	Max. RPM	Std. Pack	Item No. Steel
10"	.0118	2"	2"	1-7/8"	1-5/8"	4,000	1	03190
	.014							03200
	.020							03210

Knot Wire Cup Brushes - For manual axle cleaning operations and touch-up work; high aggression for efficient cleaning action on right angle grinders.



Dia.	Wire Size	Arbor Hole	Trim Length	Max. RPM	Standard Pack	Item Number Steel
3-1/2"	.023	M14 x 2.0	7/8"	13,000	1	13152
		5/8"-11 UNC				13156
4"	.023	5/8"-11 UNC	1-1/4"	10,200	1	12316
5"	.023	5/8"-11 UNC	1-3/8"	9,000	1	12276*
6"	.023	5/8"-11 UNC	1-3/8"	6,600	1	12376

* Internal Nut

Power Tube Brushes - For manual cleaning of internal threads for axle end-cap retaining bolts; double stem, double spiral construction provides rapid cleaning on drills.



Dia.	Wire Size	Brush Part	Stem Dia.	Overall Length	Standard Pack	Item Number Steel
1"	.0104	2-1/2"	1/4"	5-1/2"	10	21115
1-1/8"	.0104	2-1/2"	1/4"	5-1/2"	10	21168+
1-1/4"	.0104	2-1/2"	1/4"	5-1/2"	10	21167

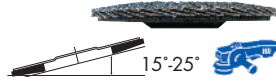
+ Special order item. Contact Customer Service for details.



Railcar Axle Reconditioning Products

Coated and Non-Woven Abrasives are ideal tools for surface reconditioning and final finishing of wheel seats, bearing journals and bearing-journal filets. Coated abrasives cut more quickly and are typically used for blending and initial finishing work. Non-Woven abrasives produce finer final finishes and are very efficient polishing tools.

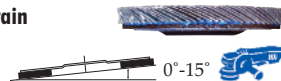
Tiger Disc - Angled Style (Type 29) - Phenolic Backing - Zirconium Grain
Maximum aggression and long life; for blending and finishing journals.



Diameter	Grit Size	Standard Pack	Max. RPM	Item Number 7/8" Arbor	Item Number 5/8"-11 Arbor
4-1/2"	40	10	13,000	50603	50608*
	60			50604	50609*
	80			50605	50610*
	120			50606	-
7"	40	10	8,600	50623	50643*
	60			50624	50644*
	80			50625	50645*
	120			50626	50646*

* Patent # 6,945,863

Big Cat® - High Density Flat Style (Type 27) - Phenolic Backing - Zirconium Grain
Increased conformability and maximum life; ideal for blending and finishing journal filets and dust guards.



Diameter	Grit Size	Standard Pack	Max. RPM	Item Number 7/8" Arbor	Item Number 5/8"-11 Arbor
4-1/2"	40	10	12,000	50803	50808*
	60			50804	50809*
	80			50805	50810*
	120			50806	-
7"	40	10	8,600	50823	50843*
	60			50824	50844*
	80			50825	50845*
	120			50826	50846*

* Patent # 6,945,863

Tiger® Mounted Flap Wheels - 1/4" Stem - Aluminum Oxide.
For touch-up work on sealing and bearing surfaces.



Diameter	Width	Grit Size	Max. RPM	Standard Pack	Item Number
3"	1"	60	23,000	10	52027
		80			52028
		120			52029

Hook & Loop Style Surface Conditioning Discs - For polishing and final finishing.



Diameter	Grade	Standard Pack	Item Number
7"	Medium (Maroon)	10	51522
8"	Medium (Maroon)	10	51525

Back-up Pads - For Grinders with 5/8"-11 Spindles.

Diameter	Max. RPM	Standard Pack	Item Number
7"	6,000	1	51578
8"	4,500	1	51579

Do not exceed maximum RPM of back-up pad.

Hand Pads - Aluminum Oxide - For touch-up work on sealing and bearing surfaces.

Size	Grade Type	Grade	Description	Standard Pack	Item Number
6" x 9"	Industrial	Medium	Economy General Purpose (Maroon)	60	51460
6" x 9"	Commercial	Fine	Economy (Green)	400	51456



A surface conditioning disc polishing an axle journal.



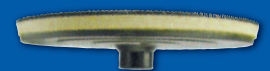
50603



52027



51522



51579



51456



Repair & Maintenance Products



Applying grease with a paint roller.



56464



40185



44663



49061



49020



25242

Please note that this brochure features only a small assortment of the surface conditioning products offered by Weiler. The featured items have been selected specifically based upon their popularity in the rail axle market.

For the full offering of Weiler power brushes, abrasives, and maintenance products, please refer to our Solutions Resource Guide, visit our website or call our Applications Hotline at 888-299-2777 to discuss your requirements with a product specialist.

Bonded Abrasive & Maintenance Products are cost-effective tools for general purpose grinding and cutting, applying lubricants such as wheel mounting compound and bearing grease, and the clean up of chips and debris produced by the machining of wheels and axles.

Vortec Pro® Type 27 Grinding Wheels -

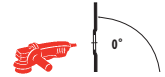
For general purpose grinding and reworking of part features.



Diameter	Thickness	Arbor Hole	Type	Max. RPM	Std. Pack	Item No.
Aluminum Oxide - For General Purpose Steel Applications						
4-1/2"	1/4"	5/8"-11 7/8"	A24R - Metal	13,300	10 25	56454 56464
4-1/2"	1/4"	5/8"-11 7/8"	A24N - Metal	13,300	10 25	56455 56457
7"	1/4"	5/8"-11 7/8"	A24R - Metal	8,500	10 20	56468 56467
9"	1/4"	5/8"-11 7/8"	A24R - Metal	6,600	10 20	56470 56442

Vortec Pro® Small Type 1 Reinforced Cut-Off Wheel -

For general purpose cutting and repair work.



Diameter	Thickness	Arbor Hole	Type	Max. RPM	Std. Pack	Item No.
4-1/2"	.045"	7/8"	WA60T - Metal	13,500	50	56281*

*Contaminant-free.

Vortec Pro® Economy Chip and Oil Brush - White Bristle - Wood Handle

For light duty application of grease and wheel mounting compound.

Width	Thickness	Bristle Length	Standard Pack	Item Number
4"	3/8"	1-3/4"	12	40185

Utility Scrub Brush - For application of grease and oil.

Overall Length	Fill Material	Trim Length	Block Type	Standard Pack	Item Number
20"	White Tampico	2"	Foam	12	44663

Industrial Grade Roller - Poly blend with PVC core - For application of grease and oil.

Size	Nap	Surface	Standard Pack	Item Number
9"	5mm	Smooth	12	49061

Roller Frame - Vortec Pro® Standard-duty

Size	Description	Standard Pack	Item Number
9"	1/4" dia. frame with 4 wire cage	24	49020

Vortec Pro® Garage Brushes & Handle - Lacquered Hardwood Block

Reliable and efficient brushes at a value price. For heavy sweeping of shop debris.

Block Size	Fill Material	Trim Length	Standard Pack	Item Number
24"	Palmyra	4"	1	25242
24"	Maroon Polypropylene	3-1/4"	1	25239
60" Hardwood handle with heavy-duty threaded metal tip			12	44300

Upright Brooms - Ideal for sweeping shop floors, reaching into corners, etc.

Description	Fill Material	Trim Length	Overall Length	Standard Pack	Item No.
Light Industrial Brooms - Better Quality					
5 sews - 7/8" handle	Corn & Fiber	17"	57"	12	44548
Warehouse Broom - Heavy-Duty					
4 sews - 1-1/8" handle Wire banded	Corn & Fiber	18"	57"	12	44008

